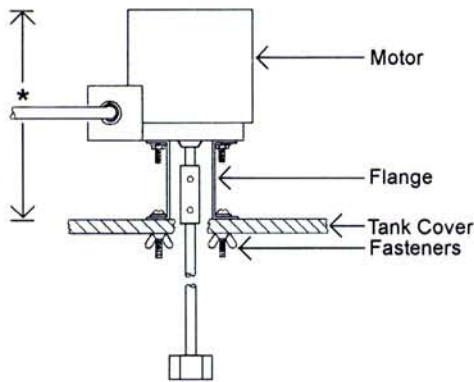


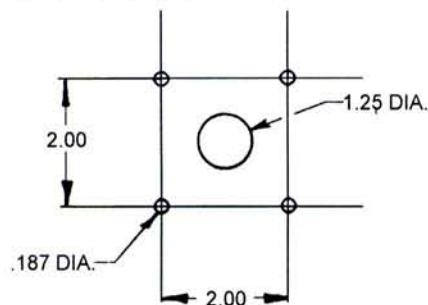
PULSAFEEDER

FLANGE MOUNT MIXER



* Height varies with mixer configuration.
Maximum height is 12".

Mounting Dimensions:



The flange mount mixer provides a convenient and economical means of mounting smaller mixers. The flange mount allows the mixer to be mounted directly to the tank cover or other flat surface eliminating the need for an additional mixer support. Flange mount mixers are available with 1/3 HP, 115V, open and 1/20 HP, 115V or 230V, TEFC motors. The 1/20 HP flange mount mixer may be mounted directly onto Pulsafeeder solution tanks featuring rigid covers (35 gal - #40365 and 55 gal - #J40366, see Accessories Brochure #GB-003). All mounts are of a one or two piece construction and are held securely to the tank surface by three to four 18/8 stainless steel fasteners which provide ample strength to withstand operational stresses.

CONSTRUCTION

All mixers feature a 316 stainless steel shaft with an integral impeller. Special epoxy and vinyl shaft coatings are available for applications where the solution being agitated is not compatible with 316 stainless steel. The shaft is coupled to the motor via a brass adapter which is held securely by four stainless steel set screws.

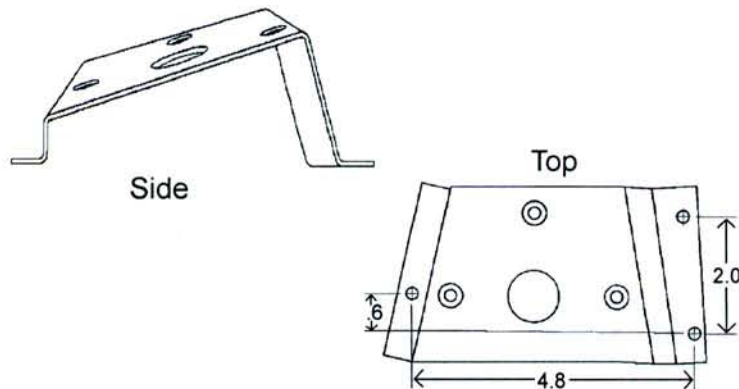
All mounting fasteners are 18/8 stainless steel. The mounting flanges may be of stainless steel or steel with a corrosion resistant coating depending on mixer size and configuration (see GB-032, Flange Mounts).

INSTALLATION

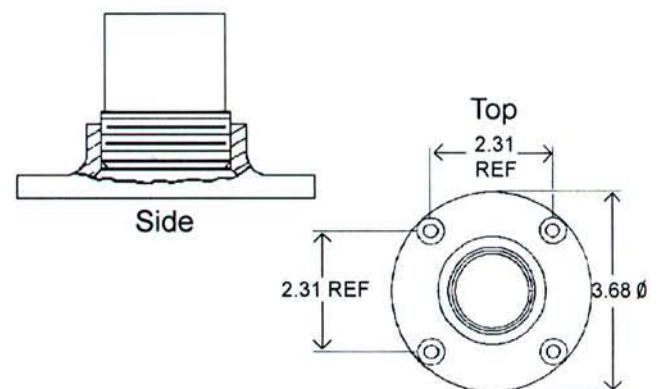
Select the proper location on the tank cover. Ensure this location allows proper support of the mixer without allowing the impeller to contact the tank (maintain at least a 3" clearance between the impeller and side wall of tank or any tank bulkhead). Cut or drill the mounting holes and the shaft hole according to the mounting dimensions provided. Place mixer assembly on top of tank and align the holes. Fasten with bolts provided.

ALTERNATE MOUNTS

1/20 HP, 230V, 50 Hz Models:



1/3 HP Models:



SPECIFICATIONS

Horsepower	1/3	1/20	
RPM	1725	1500	
Type	Open Drip Proof	Totally Enclosed Fan Cooled	
Voltage	115	115	230
Amperage	5.9	1.9	0.75
Motor Design	- split phase - sleeve bearings	- split phase - ball bearings - non ventilated	
*Shaft Length Diameter	34" x 1/2"	28" x 5/16"	
Impeller Diameter	2 1/2"	1 1/4"	

* Shafts may be cut to length upon request

CONFIGURATION

Position 1 2 3 4 5

EXAMPLE MODEL # F M TE H / WRD

Position 1 Mount

REF#	
Flange	F

Position 3 Motor Type

REF#	
Open Drip Proof*	0
Totally Enclosed Fan Cooled**	TE

Position 5 Options

REF#	
Suction Tube Shield Assy. 1" PVC Tube prevents suction tubing from entangling with mixer blade	29' 55 gal. 28655 20' 35 gal. 28656
6 ft., 3 wire, 18 gauge SJ cord and plug installed at factory	WRD
Special epoxy corrosion resistant coating for stainless steel shaft	EPOXY
Special vinyl corrosion resistant coating for stainless steel shaft (recommended for chlorine)	VINYL
230V Motor	230

Position 2 Horsepower

REF#	
1/20	M
1/3	2

* 1/3 HP Only
** 1/20 HP Only

Position 4 Shaft

REF#	
316 Stainless Steel	H

J31556
GB034
10/94