

Teflon Lined PVC Dry Polymer Eductor

(also widely known as a HOOTONANNY)

OPERATION INSTRUCTIONS

Proper installation of the Nova-Tech Polymer Eductor is very important if the best results are to be obtained. The 3/4 inch FNPT threaded fitting should be connected to a water line that will maintain at 20 PSI pressure or higher. This line should be no smaller than 3/4 inch all the way to the eductor to maintain proper water flow.

The eductor should be mounted over a solution mixing tank with enough clearance so the polymer solution in the tank will not touch the bottom of the eductor when full. The eductor must be mounted vertically. The top or suction end of the eductor is to be fitted with the supplied plastic hose (*or our optional funnel part# PE1-FUNNEL*).

When the water is turned on, the venturi section of the eductor will create enough vacuum to suck the powder polymer up through the hose and into the top of the eductor into the solution tank as the tank is being filled. The solution should be agitated for 30 to 60 minutes or until the water soluble polymer is completely dissolved and activated.

Operation

- Partially fill the solution tank with water.
- Mount eductor vertically over solution mixing tank with discharge end pointing downward. *Our optional clamp mount part# PE1-CLAMP is available for mounting to the top side of the mixing tank.*
- Connect the eductor water inlet to a water line.
- Turn on the water supply to the eductor.
- **Tube Feeding:** Hold the suction tube slightly above a measured amount of dry polymer powder. Manually adjust the suction tube position to obtain the best polymer wetting in the eductor.
- **Funnel Feeding:** Slowly pour a measured amount of dry polymer powder into the funnel

DO NOT OVER FEED the polymer into the eductor or fish eyes may occur in the solution tank and a longer mixing time will be required.

Cleaning:

- If the eductor plugs, remove polymer suction tube (or funnel).
- Wash the eductor (and/or funnel) with water until clean.
- Dry thoroughly with air and/or alcohol (the funnel has a hole at its rim for hang drying).
- Since dry polymer does not adhere to the Teflon lining, the polymer inside the eductor may also be dried with air and alcohol and then cleaned out manually.

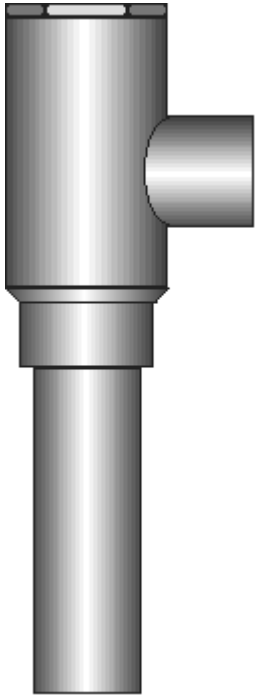
The Nova-Tech Polymer Eductor is guaranteed to give satisfactory service so long as the units are installed according to the above instructions and are not disassembled nor abused in use. If a dissatisfied, the unit will be replaced or money refunded at the customer's option upon the return of the eductor.

Teflon Lined PVC Dry Polymer Eductor

(also widely known as a HOOTONANNY)

Connection: 6 feet of 1 inch OD Clear PVC tubing (included).
Nominal lift: 5 vertical feet (1.5 m) maximum.
Nominal lift rate: 1 lb (0.45 kg) dry polymer per minute.

Suction (top)



Water Input (side)

Water Inlet: 3/4 inch FNPT
Requirements: 20 GPM (76 lpm) minimum water flow rate
20 PSI (1.4 bar) minimum water line pressure

Discharge (bottom)



Optional Accessories

PE1-FUNNEL 10 inch diameter translucent PVC polymer feed funnel
PE1-CLAMP Eductor Mixing/holding tank clamp mount

Eductor Dimensions: 8 in long x 2 in diameter, (20.3 cm long x 5.1 cm diameter)
Clear PVC tubing: 6 ft long x 1 in OD, (1.8 m x 2.54 cm OD)
Shipping Dimensions: 9 x 7.5 x 3.75 in, (22.9 x 19.1 x 9.5 cm)
Shipping Weight: 2.2 lbs, (1.0 kg)

Intl Tariff Class: 3926.90

The Nova-Tech Polymer Eductor is guaranteed to give satisfactory service so long as the units are installed according to the above instructions and are not disassembled nor abused in use. If a dissatisfied, the unit will be replaced or money refunded at the customer's option upon the return of the eductor.