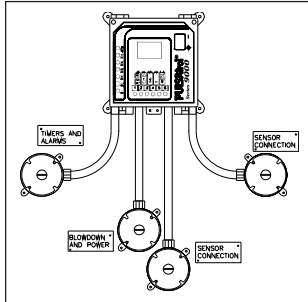


OPTIONAL PANEL ASSEMBLIES

Series MB9000 Optional Panel Assemblies

All MB9000 Systems have the following panel mounted options available.

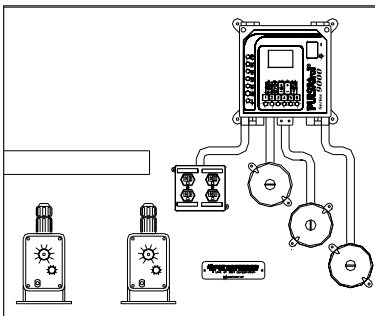
Select from one of the following configurations and insert the option code into digit #12 when configuring your controller.



Panel with Junction Boxes

Enter Option "A" in position 12 of the PULSAtrol 9000 Model String.

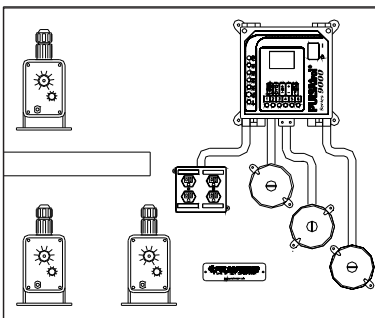
Panel features junction for timers, alarms, blowdown, power and sensor connections. The number of junction boxes may vary depending on the controller model.



Panel with Junction Boxes and Mounting Hardware for Two Pumps

Enter Option "B" in position 12 of the PULSAtrol 9000 Model String.

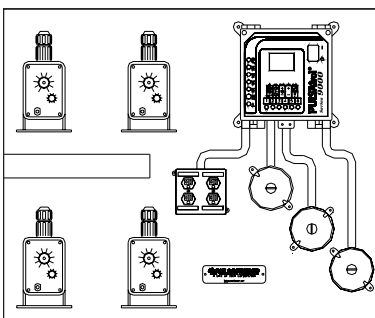
Panel features junction for timers, alarms, blowdown, power and sensor connections and mounting hardware for two pumps. The number of junction boxes may vary depending on the controller model.



Panel with Junction Boxes and Mounting Hardware for Three Pumps

Enter Option "C" in position 12 of the PULSAtrol 9000 Model String.

Panel features junction for timers, alarms, blowdown, power and sensor connections and mounting hardware for three pumps. The number of junction boxes may vary depending on the controller model.



Panel with Junction Boxes and Mounting Hardware for Four Pumps

Enter Option "D" in position 12 of the PULSAtrol 9000 Model String.

Panel features junction for timers, alarms, blowdown, power and sensor connections and mounting hardware for four pumps. The number of junction boxes may vary depending on the controller model.