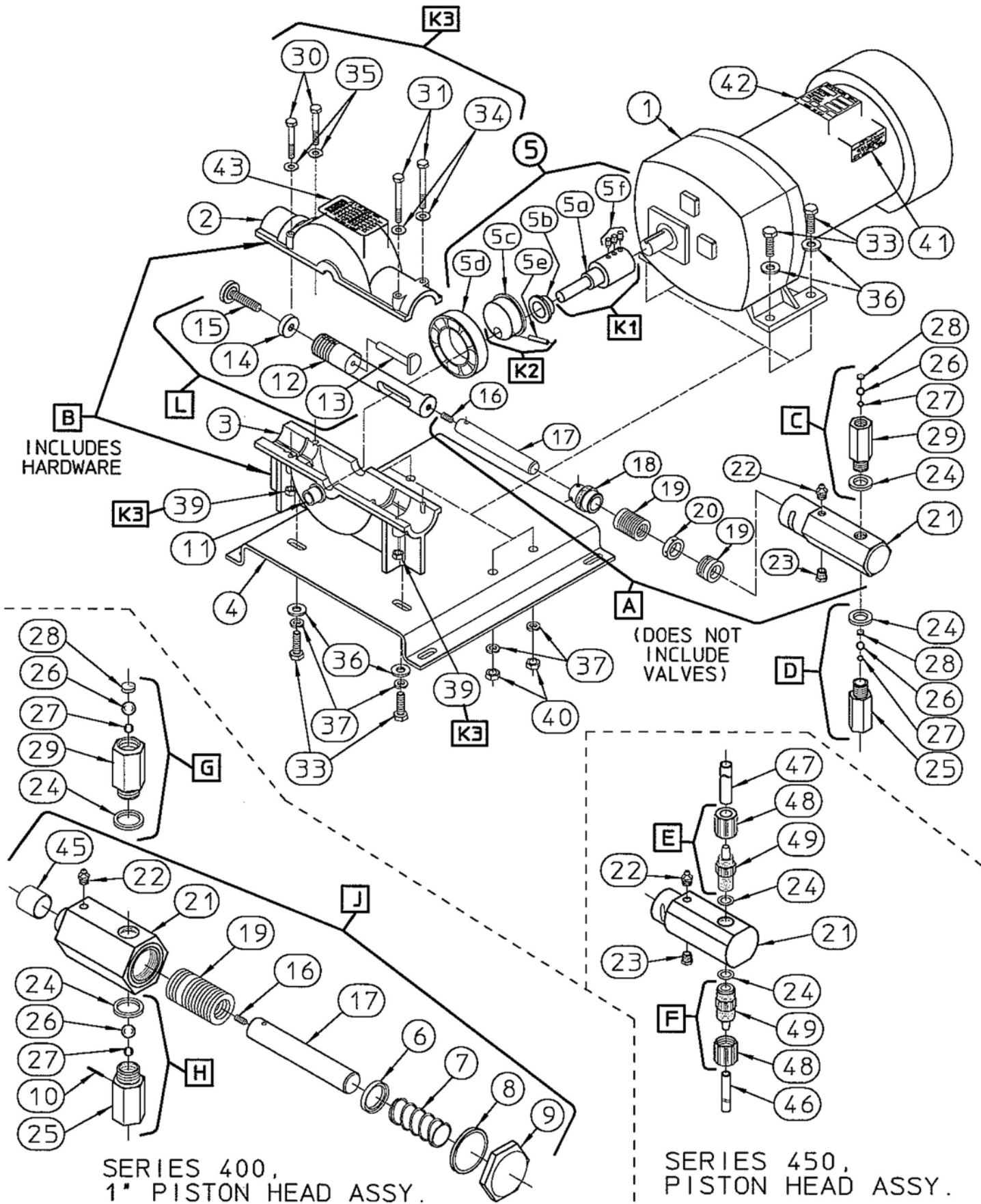


# SERIES 400 & 450 PART DIAGRAM



# SERIES 400 & 450 PARTS LIST

ITEM	PART#	DESCRIPTION	QTY
1	J32749	MOTOR 30hp 115/230v 50/60hz.	1
	J32750	MOTOR 60hp 115/230v 50/60hz.	
2	J29240	HOUSING, TOP	1
3	J29241	HOUSING, BOTTOM	1
4	J20723	BASE SIMPLEX	1
5	32648	SHAFT, CAM/BEAR. ASSY. (SIMPLEX)	REF
5a	37899	SHAFT, MIAN	1
5b	21965	BUSHING, .75"x.88"x.5"	1
5c	22263	CAM, MAIN BEARING	1
5d	20845	BALL BEARING	1
5e	33771	ROLL PIN	1
5f	D4844-31	SCREW, SET .25"-20 x.38"	3
6	* 38710	SPACER, PACKING 1"	1
7	* 38986	SPRING, compress. 1.0" PACK.	1
8	* 33082	O-RING, 1.0" PIST. VT	1
9	* 28840	CAP. HEAD 1.0" PIST. CRS	1
	* 28841	CAP. HEAD 1.0" PIST. 304SS (S)	
10	* 33767	PIN, SUCTION CK. .50 SST	1
11	21972	BUSHING	1
12	38220	SLIDE	1
13	33764	PIN, SLIDE	1
14	32971	NUT, ADJ. SCREW LOCK	1
15	37090	SCREW, ADJUST.	1
16	37053	SCREW, .25"-28 x .5"	1
17	34180	PISTON .25" DIA. 303 SS	1
	34182	PISTON .38" DIA. 303 SS	
	34184	PISTON .50" DIA. 303 SS	
	34186	PISTON .63" DIA. 303 SS	
	* 34188	PISTON 1.0" DIA. 303 SS	
18	32972	NUT, PACKING .25" BORE	1
	32973	NUT, PACKING .38" BORE	
	32974	NUT, PACKING .50" BORE	
	32975	NUT, PACKING .63" BORE	
19	33420	PACKING SET, .25" NEO (STD)	1
	33421	PACKING SET, .38" NEO (STD)	
	33422	PACKING SET, .50" NEO (STD)	
	33423	PACKING SET, .63" NEO (STD)	
	* 33424	PACKING SET, 1.0" NEO (STD)	
	33427	PACKING SET, .25" TEF (OPT S)	
	33428	PACKING SET, .38" TEF (OPT S)	
	33429	PACKING SET, .50" TEF (OPT S)	
	33430	PACKING SET, .63" TEF (OPT S)	
	* 33431	PACKING SET, 1.0" TEF (OPT S)	
20	28380	GREASE GLAN .25" & .38" BORE PVC	1
	28381	GREASE GLAN .50" & .63" BORE PVC	
21	SERIES 400:		1
	28821	HEAD, PUMP, .25 BORE 304SS (S-SER)	
	28823	HEAD, PUMP, .38 BORE 304SS (S-SER)	
	28825	HEAD, PUMP, .50 BORE 304SS (S-SER)	
	28827	HEAD, PUMP, .63 BORE 304SS (S-SER)	
	* 28828	HEAD, PUMP, 1.0 BORE CRS	
	* 28829	HEAD, PUMP, 1.0 BORE 304SS (S-SER)	
	SERIES 450:		
	28834	HEAD, PUMP, .25 BORE PVC	
	28835	HEAD, PUMP, .38 BORE PVC	
	28836	HEAD, PUMP, .50 BORE PVC	
	28837	HEAD, PUMP, .63 BORE PVC	
22	26811	GEASE FITTING	1
23	26810	GREASE FITTING RELIEF	1
24	37305	SEAL RING PVC SMALL	2
	37306	SEAL RING PVC LARGE	
	J27903	GASKET, TEF.	
25	21274	VALVE, BODY, SUCTION	1
	* 21277	BODY, SUCTION CHECK .25" NPT	
26	L1000500-ALA	VALVE BALL .38 DIA. (STD)	2
	L1000500-316	VALVE BALL .38 DIA. (OPT)	
	* 20580	VALVE BALL .69 DIA. 316SS (STD)	
	* 20578	VALVE BALL .69 DIA. TEF (OPT)	
27	L1000400-ALA	VALVE BALL .25 DIA. (STD)	2
	L1000400-316	VALVE BALL .25 DIA. (OPT)	
	* 20579	VALVE BALL .44 DIA. 316SS (STD)	
	* 20577	VALVE BALL .44 DIA. TEF (OPT)	
28	38988	SPRING, VALVE DISCH.	2
	* 38989	SPRING, VALVE DISCH.	
29	21273	VALVE BODY, DISCHARGE	1
	* 21278	VALVE DISCHARGE CK. .25"NPT	

+ NOTE: SERIES 400 w/1" PISTON.

ITEM	PART#	DESCRIPTION	QTY
30	21406	BOLT, .25"-20 x 2"	2
31	21407	BOLT, .25"-20 x 2.2"	2
32	21411	BOLT, .31"-18 x 1"	6
34	42022	WASHER, .28" x .62" FLAT SST	2
35	42035	WASHER, 'D'	2
36	42053	WASHER, .31" FLAT	6
37	J42052	WASHER, .31" LOCK	6
39	32942	NUT, .25"-20 x .22 SST	4
40	J32944	NUT, .31"-18	4
41	25321	LABEL, CTI LOGO	1
42	60608	LABEL, DATA BLANK	1
43	30705	LABEL, DECAL (SET S405)	1
	30706	LABEL, DECAL (SET S409)	
	30707	LABEL, DECAL (SET S413)	
	30708	LABEL, DECAL (SET S417)	
	30709	LABEL, DECAL (SET S425)	
	30710	LABEL, DECAL (SET S429)	
	30711	LABEL, DECAL (SET S433)	
	30712	LABEL, DECAL (SET S437)	
	30713	LABEL, DECAL (SET S441)	
	30714	LABEL, DECAL (SET S445)	
45	+21970	BUSHING BRONZE	1
46	00006	TUBING, SUCTION .44" OD PVC	1
47	J00012	TUBING, DISCHARGE .50" OD PPL	1
48	J24960	NUT, COUPLING	2
49	J41630	VALVE, HOUSING DOUBLE CHECK	1

+ NOTE: SERIES 400 w/1" PISTON.

ITEM	PART#	DESCRIPTION	QTY
A	PISTON HEAD ASSEMBY -SERIES 400:		1
	28932	PISTON HD. .25" BORE SST (SER-S)	
	28931	PISTON HD. .38" BORE SST (SER-S)	
	28930	PISTON HD. .50" BORE SST (SER-S)	
	28929	PISTON HD. .63" BORE SST (SER-S)	
	PISTON HEAR ASSEMBY -SERIES 450:		
	28924	PISTON HD. .25" BORE PVC	
	28923	PISTON HD. .38" BORE PVC	
	28922	PISTON HD. .50" BORE PVC	
	28921	PISTON HD. .63" BORE PVC	
B	29246	HOUSING SET ASSEMBY (SIMPLES)	1
C	41672	DISCHARGE CHECK VALVE ASSY.	1
D	41674	SUCTION CHECK VALVE ASSY.	1
E	J41669	DISCHARGE CK. VALVE ASSY. (2-BALL)	1
F	J41667	SUCTION CK. VALVE ASSY. (2-BALL)	1
G	+ 41673	DISCHARGE CK. VALVE ASSY. .50"FPT	1
H	+ 41675	SUCTION CK. VALVE ASSY. .50"FPT	1
J	PISTON HEAD ASSEMBLY (PISTON 1")		1
	+ 28933	1"-BORE CRS	
	+ 28934	1"-BORE 304 SST (SER. S)	
L	38224	SLIDE ARM ASSY. (SIMPLEX)	1

+ NOTE: FOR SEREIS 400 w/1" PISTON.

ITEM	PART#	DESCRIPTION	QTY
K1	J61530	KIT, MAIN SHAFT (SIMPLEX TEF)	REF
		ITEM # 5a 37899 'SHAFT'	1
		ITEM # 5f D4844-31 'SET SCREWS'	3
K2	J61531	KIT, MAIN BEARING CAM	REF
		ITEM # 5c 22263 'CAM'	1
		ITEM # 5e 33771 'ROLL PIN'	1
K3	J61532	KIT, HOUSING SET HARDWARE	REF
		ITEM # 30 21406 'BOLT'.25 x 2'	2
		ITEM # 31 21407 'BOLT'.25 x 2.2	2
		ITEM # 34 42022 'WASHER'	2
		ITEM # 35 42035 'WASHER D'	2
		ITEM # 39 32942 'NUT'.25'	4

**NOVA-TECH**  
**INTERNATIONAL**

800 Rockmead Dr Ste 102 • Houston, TX 77339-2112  
Tel: (281) 359-8538 • Toll Free Tel: (866) 433-6682  
Fax: (281) 359-0084 • Toll Free Fax: (866) 433-6684  
sales@novatech-usa.com • www.novatech-usa.com