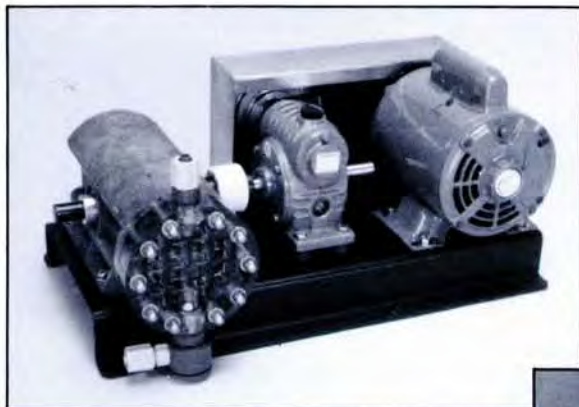
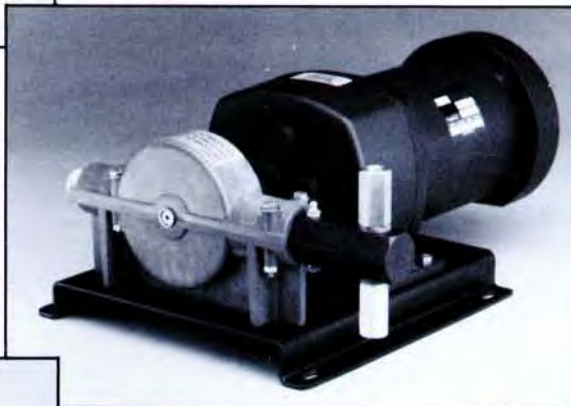


CHEMICAL FEED PUMPS FOR INDUSTRIAL INSTALLATIONS



SERIES 300

**SERIES
400**



SERIES 500



A rugged line of positive displacement metering pumps, available in Simplex or multi-head configurations. Engineered for dependability, versatility and easy maintenance for a wide variety of heavy-duty applications. Complete pump systems are available, with an extensive list of accessories to choose from.

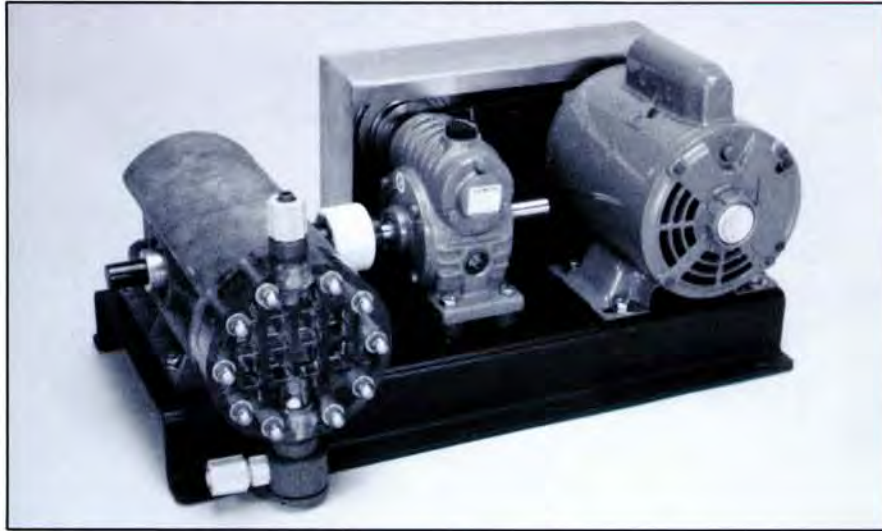
An ISO 9002 System-Certified Company

PULSAFEEDER

A Unit of IDEX Corporation



SERIES 300 HYPOCHLORINATORS/METERING PUMPS



ALL SERIES 300 PUMPS FEATURE...

- Output adjustable from zero to maximum capacity without shutdown
- Completely self-priming
- Corrosion resistant solution-handling components
- Pump assembly has lifetime lubricated mechanical components
- Heavy duty plastic housing for increased corrosion resistance
- Heavy duty speed reducer with oil sight gauge
- Metal and fabric reinforced diaphragm for extra long life
- Maximum operating pressure to 150 PSI/10 BAR
- Tank systems available with materials to suit your specifications
- Complete line of accessories and chemical resistant components available

SPECIFICATIONS

Model Number	Max. Output (GPD/LPD)	Shipping Weight	Motor Requirements	Pressure Margin / BAR	Temperature Limits	Dimensions
310 Simplex	500/1892	70 lb/32 kg	1/3 Hp. ODP 56 Frame	150 PSI/10 BAR	125 F	L: 21"; 53.34 CMx W: 15"; 38.10 CMx H: 10-1/2"; 26.67 CM
320 Duplex	1000/3785	90 lb/41 kg				L: 28"; 71.21 CMx W: 15"; 38.10 CMx H: 10-1/2"; 26.67 CM
330 Triplex	1500/5677	120 lb/55 kg	1/2 Hp. ODP 56 Frame			L: 35"; 89.08 CMx W: 15"; 38.10 CMx H: 10-1/2"; 26.67 CM
340 Quadraplex	2000/7570	145 lb/67 kg				L: 43"; 106.95 CMx W: 15"; 38.10 CMx H: 10-1/2"; 26.67 CM

CAPACITY CHART, DIRECT DRIVE DESIGN

MODEL NO.	DESCRIPTION	MAX. OUTPUT GPD/LPD	MAX. PRESSURE PSI/BAR
313 D	Simplex — 30 RPM	210/795	150/10
316 D	Simplex — 60 RPM	430/1627	150/10
323 D	Duplex — 30 RPM	420/1590	150/10
326 D	Duplex — 60 RPM	860/3255	150/10

Standard ball bearing gear-head motor with thermal overload protection, 1/4 H.P., 115/230V, 50/60Hz, single phase, TEFC.

CAPACITY CHART, STANDARD DESIGN

MOTOR PULLEY	REDUCER PULLEY	OUTPUT CAP* PER HEAD	STROKES PER MINUTE
4.0" 10.16 cm	1.75" 4.44 cm	500 GPD 1829 ltr. per day	69 SPM 69 SPM
3.25" 8.25 cm	2.50" 6.35 cm	300 GPD 1135 ltr. per day	40 SPM 40 SPM
2.50" 6.35 cm	3.29" 8.25 cm	175 GPD 662 ltr. per day	24 SPM 24 SPM
1.75" 4.44 cm	4.0" 10.16 cm	110 GPD 416 ltr. per day	13 SPM 13 SPM

*NOTE: Above chart is based on 310 Simplex at each pulley setting.

* Each standard pump shipped with 2-4 step pulleys each with 4—3 1/4—2 1/2—1 3/4 diameters for easy selection of the desired maximum output.

** Output capacities based on use of 60:1 Speed Reducer.

*** Other voltages and motor configurations readily available on request.

MATERIAL OF CONSTRUCTION*

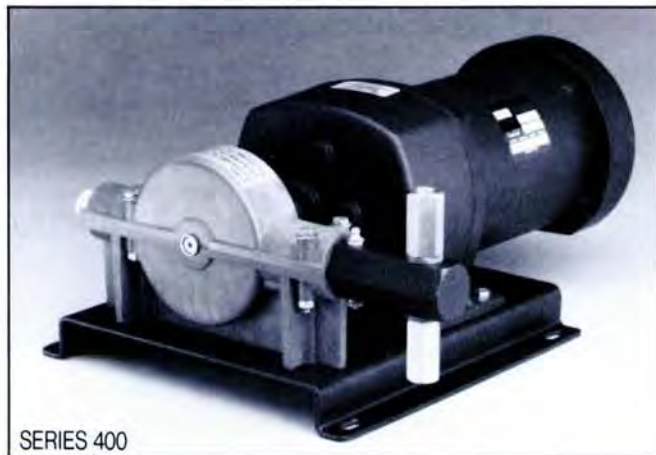
Description	Standard	Pumps for Special Applications
Pump Head	SAN	PVC, Polypropylene, Stainless Steel
Fittings	PVC	Polypropylene, Stainless Steel
Diaphragm	Hypalon	Teflon Coated, Viton
Valve Seats, Gaskets, O-rings	Hypalon	Viton
Ball Checks	Ceramic	Teflon, Stainless Steel
Discharge Tubing	Polyethylene	1/2" NPT Connections
Suction Tubing	Flexible PVC	1/2" NPT Connections
Solution Container	Polyethylene	Cold Rolled Steel, Stainless Steel

*Consult the Chemical Resistance Guide Bulletin #0001 or contact the factory for special component recommendations.

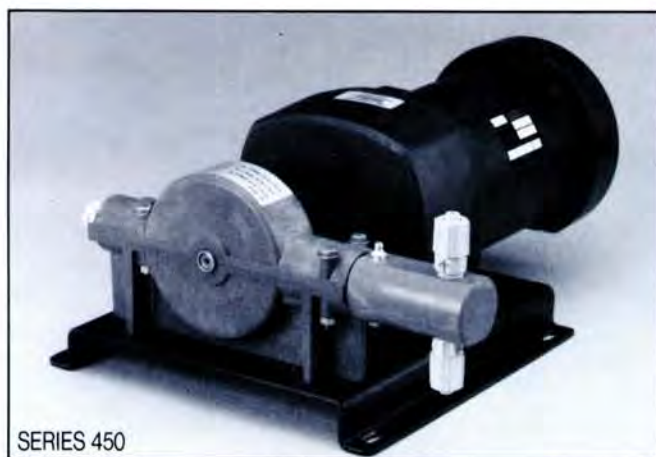


MODEL 310
WITH TANK SYSTEM

SERIES 400 & 450 CHEMICAL FEED PUMPS



SERIES 400



SERIES 450

ALL SERIES 400 PUMPS FEATURE...

- Precise metering over entire pressure and output range
- Fully adjustable output capacities from 0 to 34 gph/128.52 ltr. per hour, depending on model.*
- Rugged piston design, corrosion resistant metals and solution handling components for the most severe applications
- Heavy-duty plastic pump body for increased corrosion resistance
- Operating pressures up to 800 PSI/56 kgcm²
- Low maintenance design
- Metering adjustment accomplished without shutdown
- Available in Simplex, or Duplex for multi-chemical feed
- Complete feed systems including mixers and liquid level controls, polyethylene, mild steel and stainless steel tanks

*Actual feed rates will vary depending on solution viscosity and actual operating pressure

SERIES 450 PUMPS OFFER THESE EXTRA FEATURES...

- Head and fittings - PVC construction, packing is teflon for corrosive chemical duty. Piston is 303 stainless steel
- Double ball valve action for ease of priming
- Available with either tubing connections or 1/2" NPT connections
- Operating pressures up to 250 PSI/17 kgcm²
- Piston sizes available up to 5/8" with 30 or 60 strokes per minute
- Standard motor is TEFC 115/230 volt, 50/60 Hz, single phase
- When ordering, add PV after Series 400 model number to indicate Series 450 configuration. Only offered in Simplex and Duplex configurations.

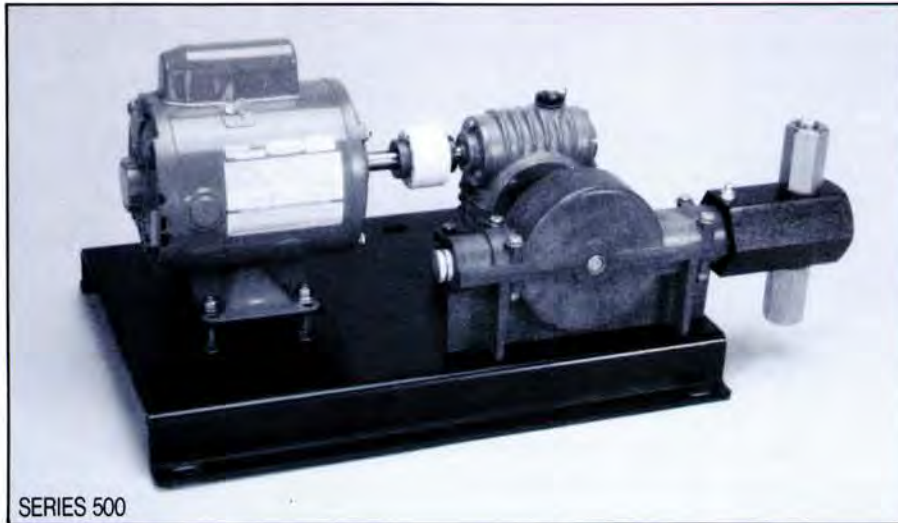
SPECIFICATIONS							
**model	output capacity gph/ltr ph	strokes per minute	maximum operating pressure	pump body	**motor	piston diameter	shp. wt.
405	50/1.89	30	800 psi 56 kgcm ²	SIMPLEX	1/4 h.p.	1/4" 6.35mm	48 lbs.
406	1.00/3.76			DUPLEX		3/8" 9.525mm	
409	0.81/3.06			SIMPLEX		1/2" 12.70mm	21.7 kg.
410	1.72/6.50			DUPLEX			
413	1.00/3.78	60		SIMPLEX		1/4" 6.35mm	55 lbs.
414	2.00/7.56			DUPLEX		3/8" 9.525mm	
417	1.62/6.12			SIMPLEX		1" 25.4mm	25 kg.
418	3.24/12.25			DUPLEX			
425	1.65/6.24	30	SIMPLEX	1/2" 12.70mm	25 kg.		
426	3.30/12.47		DUPLEX				

SPECIFICATIONS								
**model	output capacity gph/ltr ph	strokes per minute	maximum operating pressure	pump body	**motor	piston diameter	shp. wt.	
429	3.10/11.72	30	800 psi 56 kgcm ²	SIMPLEX	1/4 h.p.	5/8" 15.875mm	48 lbs.	
430	6.20/23.44			DUPLEX		1/2" 12.70mm		
433	3.30/12.47			SIMPLEX		5/8" 15.875mm	21.7 kg.	
434	6.60/24.95			DUPLEX				
437	6.20/23.47	60		SIMPLEX		1" 25.4mm	55 lbs.	
438	12.40/46.94			DUPLEX				
441	8.50/32.13			30		SIMPLEX	1" 25.4mm	25 kg.
442	17.00/64.25					DUPLEX		
445	17.00/64.25	SIMPLEX						
446	34.00/128.52	DUPLEX						

** Models listed indicate standard construction. Cold Rolled Steel Pump Head, Alumina Ceramic check valves/ball checks (316 S.S. on pumps w/1" piston), neoprene packing, 303 S.S. piston. Teflon packing and 304 S.S. pump head available on request.

** Standard ball bearing gear-head motor with thermal overload protection, electrical requirements 115/230V, 50/60Hz, single phase, TEFC.

SERIES 500 HEAVY-DUTY PISTON PUMPS



ALL SERIES 500 PUMPS FEATURE...

- Completely adjustable while running
- Easy field calibration
- Materials of construction for metering chemicals for industrial and agricultural uses
- Consistent repeatability of output
- Easy maintenance due to interchangeability of most wetted components
- Available in Simplex or Duplex configurations
- Wide range of output and pressure capability
- Single source for complete systems with a full line of accessories, i.e. tank, mixers and all necessary fittings

OPTIONS AVAILABLE:

- TEFC motors, single or 3 phase
- Explosion proof motors, single or 3 phase
- 304 stainless steel head with Teflon packing

SPECIFICATIONS				SERIES 500				
MODEL	MAX. OUTPUT GPH-lph	STROKES PER MINUTE	MAX. OPERATING PRESSURE	PUMP BODY	STAN. MOTOR H.P.	PISTON DIAMETER in/mm	SHPG. WT.	
541	6.97-26.38	29	500 psi 35 kgcm ²	Sim	1/3	1" - 25.44mm	85	
542	13.95-52.76			Dup	1/3		105	
545	13.70-51.85	57		Sim	1/2		85	
546	27.41-103.71			Dup	1/2		105	
548	27.65-104.65	115		Sim	1		85	
572	55.30-209.31			Dup	1		105	
551	10.89-41.24	29		300 psi 21 kgcm ²	Sim	1/3	1 1/4" - 31.80mm	93
552	21.78-82.48				Dup	1/3		121
553	21.41-81.06	57			Sim	1/2		93
554	42.82-162.12				Dup	1/2		121
559	43.20-163.54	115			Sim	1		93
560	86.40-327.08				Dup	1		121
561	15.69-59.38	29	200 psi 14 kgcm ²		Sim	1/3	1 1/2" - 38.16mm	96
562	31.38-118.77				Dup	1/3		127
563	30.83-116.69	57			Sim	1/2		96
564	61.66-233.38				Dup	1/2		127
569	62.21-235.46	115			Sim	1		96
570	124.42-470.93				Dup	1		127

* Standard Motors are 115V, 60Hz, NEMA 56, O.D.P.

** Standard Construction: Cold rolled steel pump head, 304 s.s. check valves, 316 s.s. check balls, neoprene packing and 303 s.s. piston.