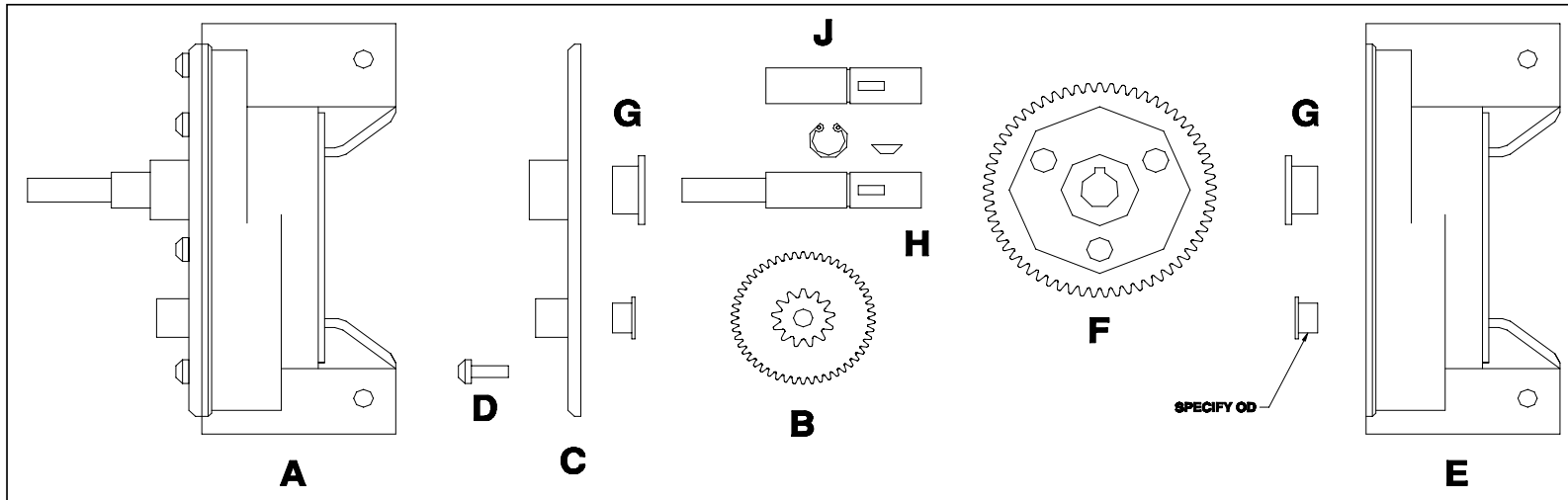


V-5 DRIVE GEAR ASSEMBLY PARTS

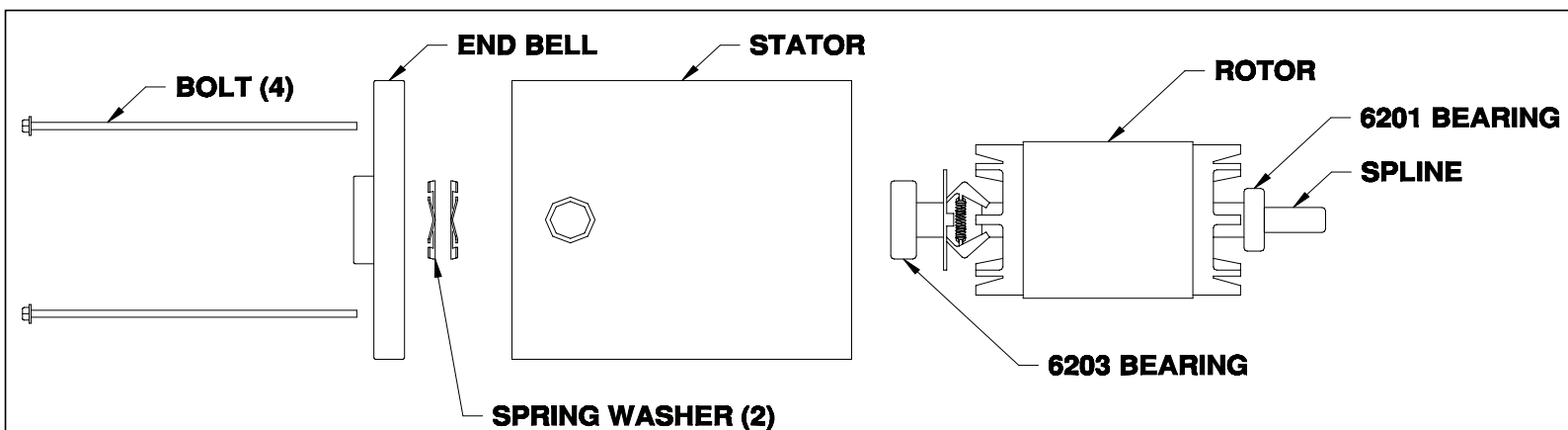


ITEM	PART #	DESCRIPTION	LIST
A	1B-6	6 RPM DRIVE GEAR ASSEMBLY	\$250
	1B-12	12 RPM DRIVE GEAR ASSEMBLY	\$250
	1B-18	18 RPM DRIVE GEAR ASSEMBLY	\$250
	1B-30	30 RPM DRIVE GEAR ASSEMBLY	NA
	1B-60	60 RPM DRIVE GEAR ASSEMBLY	NA
	1B-90	90 RPM DRIVE GEAR ASSEMBLY	NA
	1B-120	120 RPM DRIVE GEAR ASSEMBLY	NA
B	VA461-1	30 RPM INTERMEDIATE GEAR ASSEMBLY	\$75
	VA2894-1	60 RPM INTERMEDIATE GEAR ASSEMBLY	\$75
	VA2893-1	90 RPM INTERMEDIATE GEAR ASSEMBLY	\$75
	VA2895-1	120 RPM INTERMEDIATE GEAR ASSEMBLY	\$75
C	VA789	COVER ASSEMBLY (30-60-90-120 RPM)	NA

ITEM	PART #	DESCRIPTION	LIST
D	VS467	1/4-20 X 3/4" COVER SCREW (7 REQUIRED)	\$2
E	VA3691	CASE ASSEMBLY (30-60-90-120 RPM)	NA
F	VA462-1	30 RPM OUTPUT GEAR	\$60
	VA479-1	60 RPM OUTPUT GEAR	\$60
	VA582-1	90 RPM OUTPUT GEAR	\$60
	VA481-1	120 RPM OUTPUT GEAR	\$60
G	VS458-20	SET OF FOUR BUSHINGS (SPECIFY OD)	\$30
H*	VAS-480	SIMPLEX OUTPUT SHAFT (30-60 RPM)	\$30
	VAS-480-D	DUPLEX OUTPUT SHAFT (30-60 RPM)	\$35
	VAS-480-L	SIMPLEX OUTPUT SHAFT (6-12-18 RPM)	\$40
	VAS-480-L-D	DUPLEX OUTPUT SHAFT (6-12-18 RPM)	\$45

* INCLUDES SNAP RING & WOODRUFF KEY
 NA NO LONGER AVAILABLE

DRIVE MOTOR FOR GEARHEAD



PART #	DESCRIPTION	LIST
5K151-2	120VAC 1PH 60HZ 1/4HP TENV	\$310
5K151-5	230/460VAC 3PH 60HZ TENV	\$430
5K151-9	120/240VAC 1PH 50/60HZ TENV	\$430
6201	ROTOR BEARING	\$12
6203	ROTOR BEARING	\$12